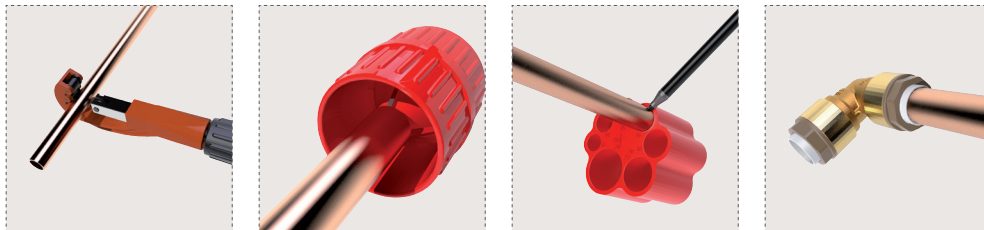


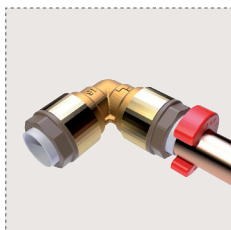
ITAP-FIT® FITTINGS

INSTALLATION



Installazione

1. Cut the pipe by a rotary pipe cutter.
2. Deburr the external surface of the pipe.
3. Insert the pipe in the depth gauge and mark the pipe.
4. Insert the pipe by pushing it as far as it reaches the blocking point, that should correspond to the mark made before. If you are using cross-linked polyethylene pipes (PEX) or polybutylene pipes you have to insert the liner before the connection.
5. To disconnect the fitting you just need to push the release liner by the lever or the clip and at the same time pull the pipe.



**NO NEED TO PRESS.
NO NEED TO TIGHTEN.**



USE OF THE FITTINGS WITH MANIFOLDS AND VALVES

